



SIMPLIFYING ESD – ADVANCING ENDOSCOPY

ENDOSCOPIC
SINGLE-USE
DEVICES

FUJIFILM
Value from Innovation



ST HOODS



ST Hoods have a transparent, small caliber tip, maintaining a clear field of view.

- Providing a clear and stable view by maintaining the distance between the distal end and mucosal layer
- Side holes for better drainage of fluid to maintain a clear endoscopic view
- Sterile and single-use for better infection control
- Guide groove (available with DH-33GR and DH-34CR) to stabilise endotherapeutic devices

Model	Material code	Characteristics	Ø Outer (mm)	Ø Inner tip (mm)	Tip length (mm)	Accessory guide	Applicable endoscopes	Unit
DH-28GR	16426426	Transparent; silicone rubber, polycarbonate resin	11.5	8.0	7.0	Without	EG-760Z EG-600ZW EC-740T/M, L	5
DH-29CR	16426438	Transparent; silicone rubber, polycarbonate resin	12.4	8.0	7.0	Without	EG-760CT EC-760P-V/M, L	5
DH-30CR	16426440	Transparent; silicone rubber, polycarbonate resin	13.8	8.0	7.0	Without	EC-760R-V/M, I, L EC-760ZP-V/M, L EC-760Z-V/M, L EC-720R/M, I, L EC-600WM/WI/WL EC-600ZW/M, L	5
DH-33GR	16635493	Transparent; guide type; silicone rubber, polycarbonate resin	11.8	7.0	7.0	Yes	EG-760Z EG-760CT EC-740T/M, L	5
DH-34CR	16635508	Transparent; guide type; silicone rubber, polycarbonate resin	13.6	7.0	7.0	Yes	EC-760R-V/M, I, L EC-760ZP-V/M, L EC-600WM/WI/WL	5



DH-28GR



DH-29CR



DH-30CR



DH-33GR



DH-34CR

OBSERVATION HOOD



Model	Characteristics	Ø Outer (mm)	Tip length (mm)	Applicable endoscopes
DH-17EN	Transparent	11.5	1.5	EI-580BT, EN-580T



DH-17EN

TOP ENDOSCOPIC HOODS*

THIRD PARTY PRODUCT



The slit and drainage hole allows fluid to drain away quickly.

Model	Material code	Characteristics	Ø Outer (mm)	Tip length (mm)	Applicable endoscopes	Unit
SHS	70100142568	Soft and transparent	8.6–9.8		EG-760R	5
SHM	70100139249	Soft and transparent	9.8–10.6		EG-760Z EG-760CT EC-740T/M, L	5
SHL	70100139248	Soft and transparent	10.6–12.6		EC-760R-V/M, I, L EC-760ZP-V/M, L EC-760P-V/M, L	5
SHLL	70100143067	Soft and transparent	12.6–14.0		EC-760Z-V/M, L	5
SHM-B	70100139250	Soft and black	9.8–10.6		EG-760Z EG-760CT EC-740T/M, L	5
SHL-B	70100139251	Soft and black	10.6–12.6		EC-760R-V/M, I, L EC-760ZP-V/M, L EC-760P-V/M, L	5
SHF-020	70100143067	Hard and transparent	9.8	7.0	EG-760Z EC-740T/M, L	5
SHF-035	70100139658	Hard and transparent	10.8	7.0	EG-760CT EC-760P-V/M, L	5
SHF-045	70100141234	Hard and transparent	11.5	7.0	EC-760R-V/M, I, L	5
SHF-050	70100139656	Hard and transparent	12.2	7.0	EC-760ZP-V/M, L	5
SHF-055	70100139657	Hard and transparent	13.2	7.0	EC-760Z-V/M, L	5



SHS / M / L / LL



SHM-B / L-B



SHF

* Manufactured by Top Corporation, Japan. Not for sale in Canada.



CLUTCHCUTTER



THE 3-IN-1 ESD TOOL FOR VARIOUS TECHNIQUES

The ClutchCutter is a well proven endoscopic mucosal dissection tool that can enable the user to grasp, and electrically dissect and coagulate the mucosa of the upper and lower GI tract. In procedures that need to be performed perpendicular to the muscular layer, the ClutchCutter makes it possible to grasp, lift up and incrementally dissect the tissue.

ClutchCutter



**TOOTHED JAWS TO GRIP
THE MUCOSA EFFICIENTLY**

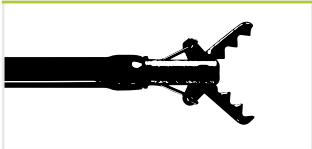
**ROTATABLE DISTAL JAWS FOR
A PRECISE LESION APPROACH**

**INSULATED OUTER EDGE TO REDUCE
RISK OF DAMAGING LOCAL TISSUE**

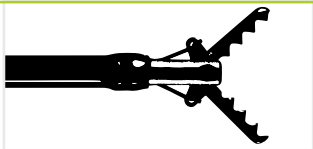
CLUTCH CUTTER ESD KNIFE



Model	Material code	Characteristics	Identifier	Knife length (mm)	Working length (mm)	Ø Working channel (mm)
DP2618DT - 35 -	16444210	ESD Scissor	- 35 -	3.5	1,800	2.8 or more
DP2618DT - 50 -	16444222	ESD Scissor	- 50 -	5.0	1,800	2.8 or more



DP2618DT -35-: 3.5 mm jaw length



DP2618DT -50-: 5.0 mm jaw length



1. Incision



2. Dissection



3. Coagulation

3-in-1 ability
All stages of ESD can be performed with this 3-in-1 tool, from marking to making incisions and coagulating.



FLUSHKNIFE



FlushKnife **NS**

FlushKnife **BTs**

ENHANCED USABILITY IDEAL FOR ALL PHYSICIANS

One knife covers everything from marking (coagulation), dissection to arrest of bleeding. The high versatility of this knife improves the efficiency of the procedure by reducing the exchange of instruments during the procedure.

THINNER SHEATH FOR ENHANCED SUCTION PERFORMANCE¹

EXCELLENT MANOEUVRABILITY AND STABILITY²

FLUID SUPPLY CAPABILITY WITH WATER PUMP JW-3

1. Due to tapered catheter design between distal section and handle to increase working channel lumen.
2. Due to increased catheter diameter on the distal section to secure stable position in the working channel.

FLUSHKNIFE BTS



FlushKnife BTS has a ball tip which touches a wider range of tissue and supports effective coagulation.

Model	Material code	Characteristics	Identifier	Colour code	Knife length (mm)	Working length (mm)	Ø Working channel (mm)
DK2620JI-B15-	16659607	Ball tip, Slim Type	- B15 -	Green	1.5	2,000	2.8 or more
DK2620JI-B20-	16659619		- B20 -	Blue	2.0		
DK2620JI-B25-	16659621		- B25 -	Yellow	2.5		
DK2620JI-B30-	16659633		- B30 -	Black	3.0		
DK2623JI-B15-	16659669	Ball tip, Long slim type	- B15 -	Green	1.5	2,300	2.8 or more
DK2623JI-B20-	16659671		- B20 -	Blue	2.0		

FLUSHKNIFE NS



FlushKnife NS has a slim needle shaped tip.

Model	Material code	Characteristics	Identifier	Colour code	Knife length (mm)	Working length (mm)	Ø Working channel (mm)
DK2620JI-N10-	16659554	Needle tip, Slim Type	- N10 -	White	1.0	2,000	2.8 or more
DK2620JI-N15-	16659566		- N15 -	Green	1.5		
DK2620JI-N20-	16659578		- N20 -	Blue	2.0		
DK2620JI-N25-	16659580		- N25 -	Yellow	2.5		
DK2620JI-N30-	16659592		- N30 -	Black	3.0		
DK2623JI-N15-	16659645	Needle tip, Long slim type	- N15 -	Green	1.5	2,300	2.8 or more
DK2623JI-N20-	16659657		- N20 -	Blue	2.0		



1. Marking (coagulation)



2. Water jet



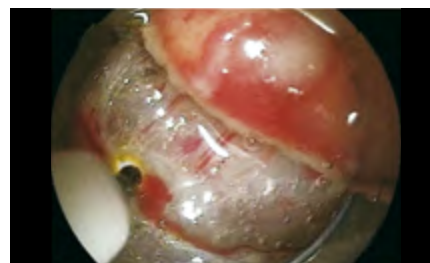
3. Mucosal incision



4. Submucosal dissection



5. Submucosal supply



6. Coagulation

Recommended applications

Diameter	1 mm	1.5mm	2mm	2.5mm	3mm
Oesophagus	○	◎	◎	△	△
Stomach	○	◎	◎	◎	○
Colon	○	◎	◎	△	△

◎ Best indication ○ Possible Use △ Indicated in certain cases

Please note: Examples of the suitable protruding lengths are suggested by Takashi Toyonaga M.D. of Kobe University Hospital. A physician must take into consideration each particular condition of the area or lesion to be dissected when selecting a protruding knife length.



TRACMOTION



TRACMOTION

360° ROTABLE JAWS

NO LOCKING MECHANISM NEEDED

POTENTIAL FOR BETTER VISUALISATION

SINGLE OPERATOR CAPABILITY

PRECISE MOVEMENT, FASTER PROCEDURES

To simplify the lesion extraction process, Fujifilm has developed the TRACMOTION traction device for ESD. It is designed to potentially facilitate enhanced visualisation. It is expected to simplify the lesion excision process to allow for greater control and manoeuvrability during ESD procedures.

TRACMOTION is equipped with 360° rotatable jaws, enabling easy grasping and re-grasping of large lesions.

TRACMOTION SINGLE OPERATOR ESD TRACTION DEVICE



Model	Material code	Ø Outer, insertion portion (mm)	Working length (mm)	Compatible endoscope
GF3612RT	16747076	3.6	1,260	EI-740D/S and dual channel endoscopes with 3.7 mm minimum instrument channel diameter and 1,030 mm working length



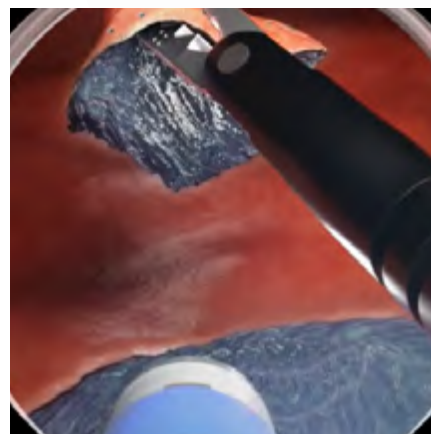
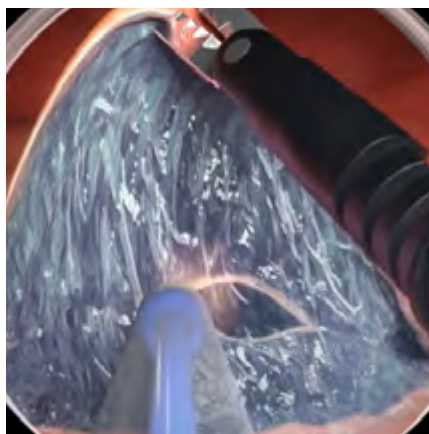
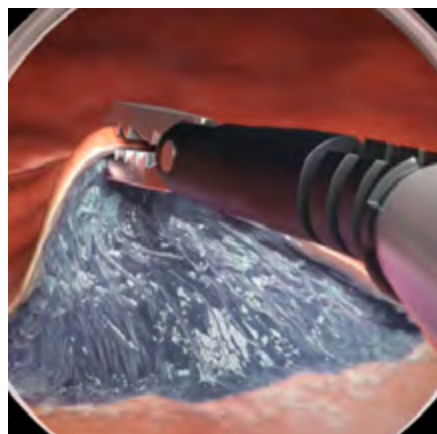
GF3612RT

Compatibility with dual channel endoscopes

TRACMOTION is designed to work simultaneously and unobtrusively with an ESD knife using a dual channel endoscope. It is compatible with the Fujifilm EI-740D/S dual channel endoscope as well as other dual channel endoscopes that have one 3.7mm (or larger) instrument channel and a working length of 1,260 mm. With TRACMOTION, ESD also is expected to be performed in retroflexion to further enhance visualisation in challenging anatomy.

Simplifying ESD

With TRACMOTION, an endoscopist uses simple single-hand movements to control the distal end of the product, independent of the endoscope's movement. TRACMOTION can hold tissue during ESD without complicated locking mechanisms, potentially adding efficiency during this advanced procedure. In addition, performing ESD with TRACMOTION is expected to allow for en bloc extraction while reducing the amount of lifting agent, the number of device exchanges, and the procedure time. As an intuitive retraction tool, TRACMOTION simplifies the lesion extraction process, and offers the potential to endoscopists to reduce their time in both learning and performing ESD procedures.





JW-3 WATER PUMP



Advanced piping technology enables water flow to be quickly stopped. The one litre water bottle enables prolonged water use and minimises the need for constant refilling.

Water jet system and rotatable water supply port

The water jet system keeps the tip of the knife clean by washing off debris and lesion tissue adhering to the tip, thereby maintaining the sharpness of the knife throughout the treatment. The rotatable water supply port allows comfortable usage of both tube and syringe connection.



Design Award Winner
JW-3 Water Pump



reddot winner 2022



FOR INFECTION PREVENTION AND SAFETY



Tip of JT-3DT to connection to saline bag

Autoclavable tubes and water tank, disposable tubes

Both tubes (JT-3RC, JT-3RC2, and JT-3RW) and water tank are autoclavable for effective sterilisation and are re-usable. In addition, sterilised disposable tube (JT-3DC, JT-3DW, and JT-3DT) can be selected in view of infection management.

A line-up for therapeutic device (FlushKnife Slim: DK2620JI and DK2623JI) connection tube capable of submucosal supply

JT-3DT, designed for therapeutic device (FlushKnife Slim: DK2620JI and DK2623JI) is a disposable tube that connects to a saline bag via a port connector.

By combining this tube with FlushKnife Slim: DK2620JI and DK2623JI, it's possible to supply saline solution into the submucosal layer during ESD treatment.

For safety use, to avoid human error

If the cover of the pump head is opened during operation, operation is automatically stopped to protect users from injuries and accidents. The tube detector automatically recognises which tube is in use. In consideration of safety use, the maximum flow rate is set for each tube. During continuous flow, the water supply is automatically stopped after a set duration for each type of detected tube, thus avoiding an incidence of human error.

Max. water flow rate and automatic cut-off timer

Tube-Typ	Max. water flow rate	Automatic cut-off timer
A: Instrument channel tube	840 ml/min.	approx. 20 seconds
B: Water jet tube	220 ml/min.	approx. 20 seconds
C: Disposable therapeutic tube	209 ml/min.	approx. 8 seconds

WATER PUMP ACCESSORIES

Product name	Material code	Where to use	Characteristics	Total tube length (mm)	Unit
JT-3RC Instrument channel tube	16642836	Instrument channel (mode A)	Suction/irrigation tubing, reusable	2,230	1
JT-3RC2 Instrument channel-joint tube	16642850	Instrument channel (mode A)	Suction/irrigation tubing, reusable	195	5
JT-3DC Disposable instrument channel tube	16642862	Instrument channel (mode A)	Endoscopic insufflation tubing set, single-use	2,065	10
JT-3RW Water jet tube	16642848	Water jet (mode B)	Suction/irrigation tubing, reusable	1,340 Luer connector	2
JT-3DW Disposable water jet tube	16642874	Water jet (mode B)	Endoscopic insufflation tubing set, single-use	1,330 Luer connector	10
JT-3DT Disposable therapeutic tube	16642886	Therapeutic device (mode C)	Endoscopic insufflation tubing set, single-use	3,350 Luer connector	10
WT-3JW Water tank	16642824	Water tank	Surgical irrigation pump		2



JT-3RC



JT-3RC2



JT-3DC



WT-3JW



JT-3RW



JT-3DW

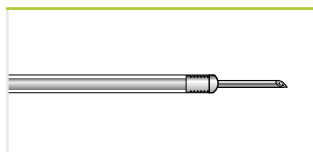


JT-3DT

**MANTA** INJECTION NEEDLES*

Manta ensures reliable retraction and extension of the needle, even in acutely angulated device positions, and prevents damage to the working channel. Enhanced kink-resistance and single handed operation provide for ease of use.

Product code	Material code	Characteristics	Ø Needle Needle length (mm)	Length (mm)	Ø Working channel (mm)	Unit
INJ1-A3-05-5-18-240	70100146666	Latching mechanism, distal needle guide, suitable with Histoacryl	0.5 (25 Gauge) 5	2,400	2.0	5
INJ1-A3-07-5-18-240	70100146657	Latching mechanism, distal needle guide, suitable with Histoacryl	0.7 (23 Gauge) 5	2,400	2.0	5



INJ1-A3

PURASTAT HAEMOSTAT

THIRD PARTY PRODUCT



PuraStat is a slightly viscous peptide solution which is approved to manage intraprocedural bleeding and reduce delayed bleeding (following ESD in the colon). When in contact with physiological fluids, the synthetic peptides self-assemble into a 3-dimensional matrix, resulting in effective haemostasis. PuraStat comes in a ready-to-use syringe. It is transparent, can be left in place and is suitable for use alongside other modalities, including coagulation and clips.

Product code	Material code	Characteristics	Unit
PURASTAT 1ml 621-034	70100152373	Haemostatic gel 1ml syringe	1
PURASTAT 3ml 621-035	70100152372	Haemostatic gel 3ml syringe	1
PURASTAT 5ml 621-036	70100152371	Haemostatic gel 5ml syringe	1
PURASTAT Nozzle System Type-E	70100153471	Haemostatic gel catheter	5



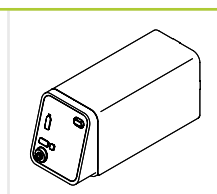
Regional availability may vary, please contact your local distribution partner for further information. PuraStat is a trademark for 3-D Matrix.

* Manufactured by FUJIFILM medwork GmbH, Germany.

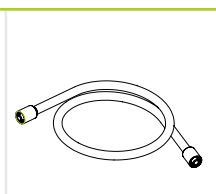
GW-100 CO₂ INSUFFLATOR

Fast resorption of insufflated CO₂ for patient friendly examinations

- Direct connection to the hospitals' medical CO₂ pipeline as well as to medical CO₂ cylinder
- Easy-to-use CO₂ flow rate switching function and compact design
- 2 controlled flow rate settings



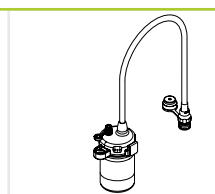
GW-100 Main Unit



CT-11G Gas Tube
Standard Accessory



WT-04G Gas / Water Tank
for 500 / 600 series
endoscopes



WT-604G Water Tank for
the ELUXEO 700 series

Tube sets for the connection of GW-100 to the medical gas pipeline and medical gas cylinders are available.

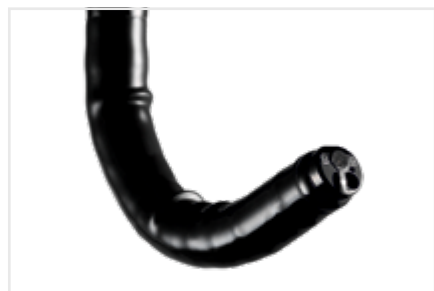


SUITABLE ENDOSCOPES FOR ESD*

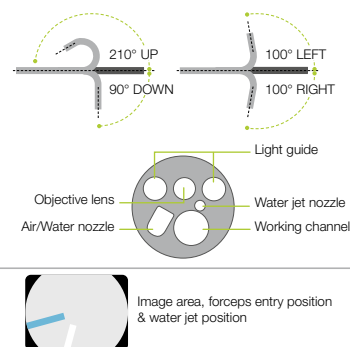
EG-760Z ELUXEO VIDEO GASTROSCOPE Optical magnification



This zoom gastroscope features the well-known 145x Multi Zoom** which leads to clear and more detailed visualisation, supporting deeper analysis of mucosal structures. It has a small bending radius and similar functionality to the routine gastroscope including all features.



Field of view	Normal 140°/Close 56°
Observation range	1.5–100mm Normal 3–100mm Close 1.5–2.5mm
Bending capability	Up 210°/Down 90° Right 100°/Left 100°
Ø Distal end	9.9mm
Ø Flexible portion	9.8mm
Ø Working channel	2.8mm
Working length	1,100mm
Total length	1,400mm



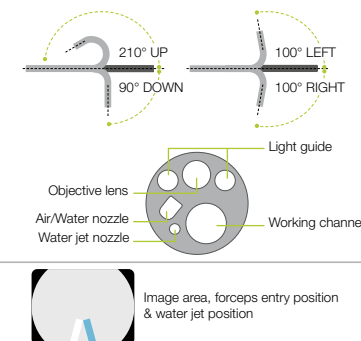
EG-760CT ELUXEO VIDEO GASTROSCOPE Therapeutic type



This gastroscope from the ELUXEO 760 series is equipped with a large 3.8mm working channel that is especially suitable for therapeutic procedures.



Field of view	140°
Observation range	2–100 mm
Bending capability	Up 210°/Down 90° Right 100°/Left 100°
Ø Distal end	10.5 mm
Ø Flexible portion	10.8 mm
Ø Working channel	3.8 mm
Working length	1,100 mm
Total length	1,400 mm



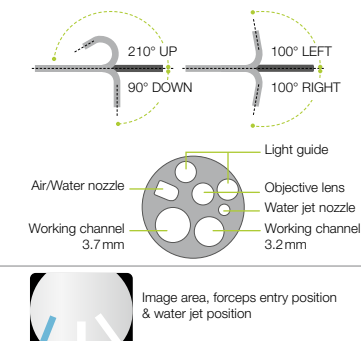
EI-740D/S ELUXEO VIDEO GASTROSCOPE & SIGMOIDOSCOPE Dual channel



The ELUXEO EI-740D/S is intended for use in both the upper gastrointestinal tract and sigmoid colon. With its two instrument channels (3.7 and 3.2 mm) and improved suction performance, it is especially suitable for various therapeutic procedures.

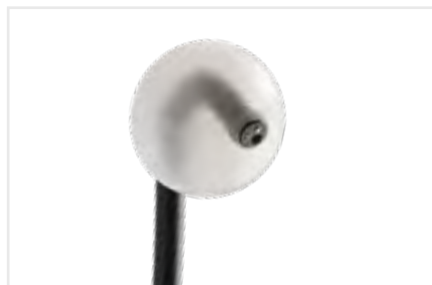


Field of view	140°
Observation range	3–100 mm
Bending capability	Up 210°/Down 90° Right 100°/Left 100°
Ø Distal end	12.8 mm
Ø Insertion tube	12.8 mm
Ø Working channel	3.7 mm/ 3.2 mm
Working length	1,030 mm
Total length	1,330 mm

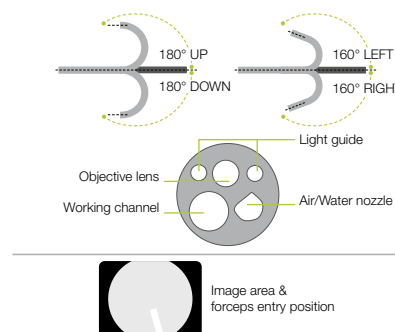


* This overview offers recommendations and does not purport to be complete.

EI-580BT SHORT DOUBLE BALLOON ENDOSCOPE



Viewing direction	0° (Forward)
Field of view	140°
Observation range	2–100 mm
Bending capability	Up 180°/Down 180° Right 160°/Left 160°
Ø Distal end	9.4 mm
Ø Flexible portion	9.3 mm
Ø Working channel	3.2 mm
Working length	1,550 mm
Total length	1,850 mm



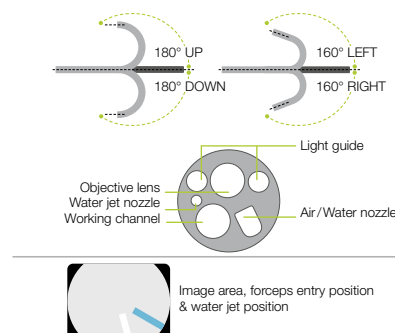
EC-760Z-V/M, L ELUXEO VIDEO COLONOSCOPE Optical magnification



The zoom colonoscope is an all-rounder. It features the brilliant and easy-to-operate 145x Multi Zoom** magnification which leads to more detailed visualisation, supporting a deeper analysis of mucosal and vascular patterns.



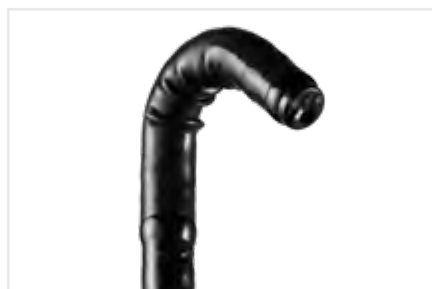
Field of view	Normal 140°/Close 56°
Observation range	1.5–100 mm Normal 3–100 mm Close 1.5–2.5 mm
Bending capability	Up 180°/Down 180° Right 160°/Left 160°
Ø Distal end	12.8 mm
Ø Insertion tube	12.8 mm
Ø Working channel	3.8 mm
Working length	1,330 mm/1,690 mm
Total length	1,650 mm/2,010 mm



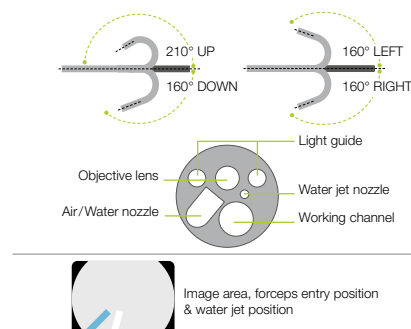
EC-740T/M, L ELUXEO VIDEO COLONOSCOPE Slim & treatment type



This slim colonoscope is equipped with Advanced Force Transmission, 210° up-angulation and a G7 grip that supports excellent manoeuvrability. It is expected to be useful for more challenging anatomies and narrow GI anatomy, such as stenosis, severe inflammation, or anatomical adhesion.



Field of view	140°
Observation range	3–100 mm
Bending capability	Up 210°/Down 160° Right 160°/Left 160°
Ø Distal end	9.8 mm
Ø Flexible portion	10.7 mm
Ø Working channel	3.2 mm
Working length	1,330/1,690 mm
Total length	1,630/1,990 mm

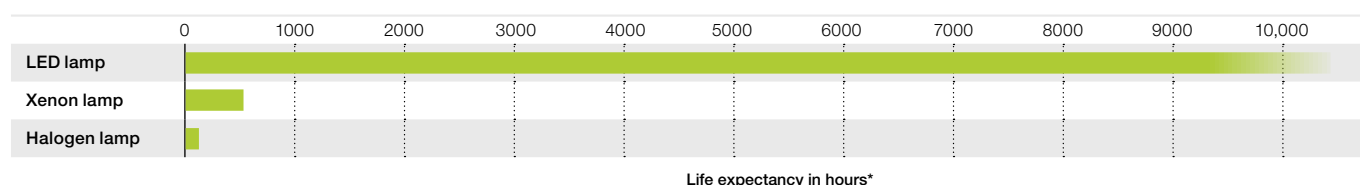


** In combination with 26" screen.

**BL-7000 ELUXEO** 4-LED LIGHT SOURCE with high durability

A reliable light source is a prerequisite for use in large clinics as well as smaller outpatient centres to ensure procedures can take place as scheduled. To achieve high standards, the eco-friendly ELUXEO 7000 system features the 4-LED Multi Light Source, which outperforms conventional Xenon or Halogen light sources: With 10,000 hours* average life expectancy for the LED lights, the ELUXEO system has far longer durability while having much lower energy consumption, resulting in better cost-efficiency.

Light source	4-LED
Air supply pump	High, Mid, Low, Off
Power rating	100–240 V, 50/60 Hz, 1.2–0.7A
Dimensions (W x H x D)	390 x 155 x 485 mm (including projection)
Weight	12.0 kg
Optical radiation safety	Class 1 LED product



Our confidence in the ELUXEO system BL-7000 is reflected by Fujifilm's **Durability Warranty**, which covers any defect of the LED light source unit that is attributable to a manufacturing or assembly fault under normal use for a period of five years or 10,000 operating hours, whichever comes first.*

VP-7000 ELUXEO HIGH-PERFORMANCE VIDEO PROCESSOR

The ELUXEO video processor VP-7000 enables you to make use of the many features provided by Fujifilm's wide range of endoscopes along with the 4-LED illumination system and its LCI and BLI visualisation modes. In addition to the ELUXEO 700 series endoscopes, it is also compatible with the 600 and 500 series of endoscopes. The processor creates high-quality images displayed in full HD on the monitor. Automatic back-up mode for data storage is integrated and the processor is DICOM compatible.

Compatible endoscopes	700/600/500 series
Output	DVI-D x2, DVI-I x1, HD-SDI x2, RGB-TV x1, S VIDEO x1, VIDEO x1
Input	1 channel PoP
External memory	USB Flash Drive
Power rating	100–240 V, 50/60 Hz, 0.8–0.5A
Dimensions (W x H x D)	390 x 110 x 485 mm (including projection)
Weight	9.0 kg

Video Processor VP-7000

Light Source BL-7000



* This Warranty is only valid according to the terms and conditions of the Durability Warranty Policy.

EP-6000 **ELUXEO Lite** VIDEO PROCESSOR with built-in LED light source



The ELUXEO Lite EP-6000 combines a reliable 3-LED light source with a processor that enables you to make use of the many features provided by Fujifilm's wide range of endoscopes. Available combined with the 700 series LCI (Linked Color Imaging) and BLI (Blue Light Imaging) visualisation modes.

Due to the use of economical LED lamps with a long durability this system is very eco-friendly. It is also compatible with the 600 and 500 series of endoscopes. The ELUXEO Lite EP-6000 creates quality images and videos displayed in full HD on the monitor.

Automatic back-up mode for data storage is integrated and the processor is also DICOM compatible.

Light source	3-LED
Air supply pump	High, Mid, Low, Off
Compatible endoscopes	700, 600 and 500 series endoscopes*
Output	DVI-D x2, RGB-TV x1, S VIDEO x1, VIDEO x1
External memory	USB Flash Drive
Power rating	100–240 V, 50/60 Hz, 2.0–1.1A
Dimensions (W x H x D)	395 x 210 x 485 mm (including projection)
Weight	15.0 kg
Optical radiation safety	Class 1 LED product

Available observation modes	White Light	BLI	LCI	FICE
700 series	●	●	●	●
600/500 series	●			●



* Excluding 590 series endoscopes, EG-530UT2, EG-530UT, EG-530UR2 and EG-530UR.



FUJIFILM

FUJIFILM Healthcare Europe GmbH

Balcke-Dürr-Allee 6 | 40882 Ratingen, Germany
+49 2102 5364-0 | endoscopy_eu@fujifilm.com
www.fujifilm-endoscopy.com

Specifications are subject to change without notice. The name FUJIFILM and the FUJIFILM logo are trademarks of FUJIFILM Corporation. All other trademarks shown are trademarks of their respective owners. All rights reserved. SAP 70100163485. 01/2024.